

COMPANY PROFILE

1/18



BUSINESS ACTIVITY



مؤسسة محمد احمد حمد البوعينين
Mohammed Ahmed Hamad Al Buainain Est.

P.O. BOX 1946, AL-JUBAIL 31951
Tel : +966 13 3636197/ 3631300
KINGDOM OF SAUDI ARABIA
www.mabtracon.com
www.kbhtech.com

PROFILE - HEAD OFFICE

1/18

Mohammed Ahmed Hamad Al Buainain Est (MAB) is a sister concern of IDEAL Al Jubail Trading & Contracting Co. Ltd (previously known as Khalifa Al Buainain **Hi-TECH**) is a 100% Saudi owned company was formed in 2019 at Jubail Saudi Arabia having three divisions in the field of Construction, Industrial Operation & Maintenance and Trading & Equipment Rental.

Established	March, 2019
Equipment Depot	• Jubail, KSA
Major activities	<ul style="list-style-type: none">• Equipment Rental• Civil Construction• Porta Cabin Manufacture• Trading• Camp and Catering
The activities are on	<ul style="list-style-type: none">• Oil & Gas Project• Refinery, Petrochemical industry• Civil project• Power plant and Marine project

- Knowledge, experiences & state-of-the-art equipment in combination with the best quality and Safety Standards have made in Saudi Oil and Gas Field



MISSION AND VISION

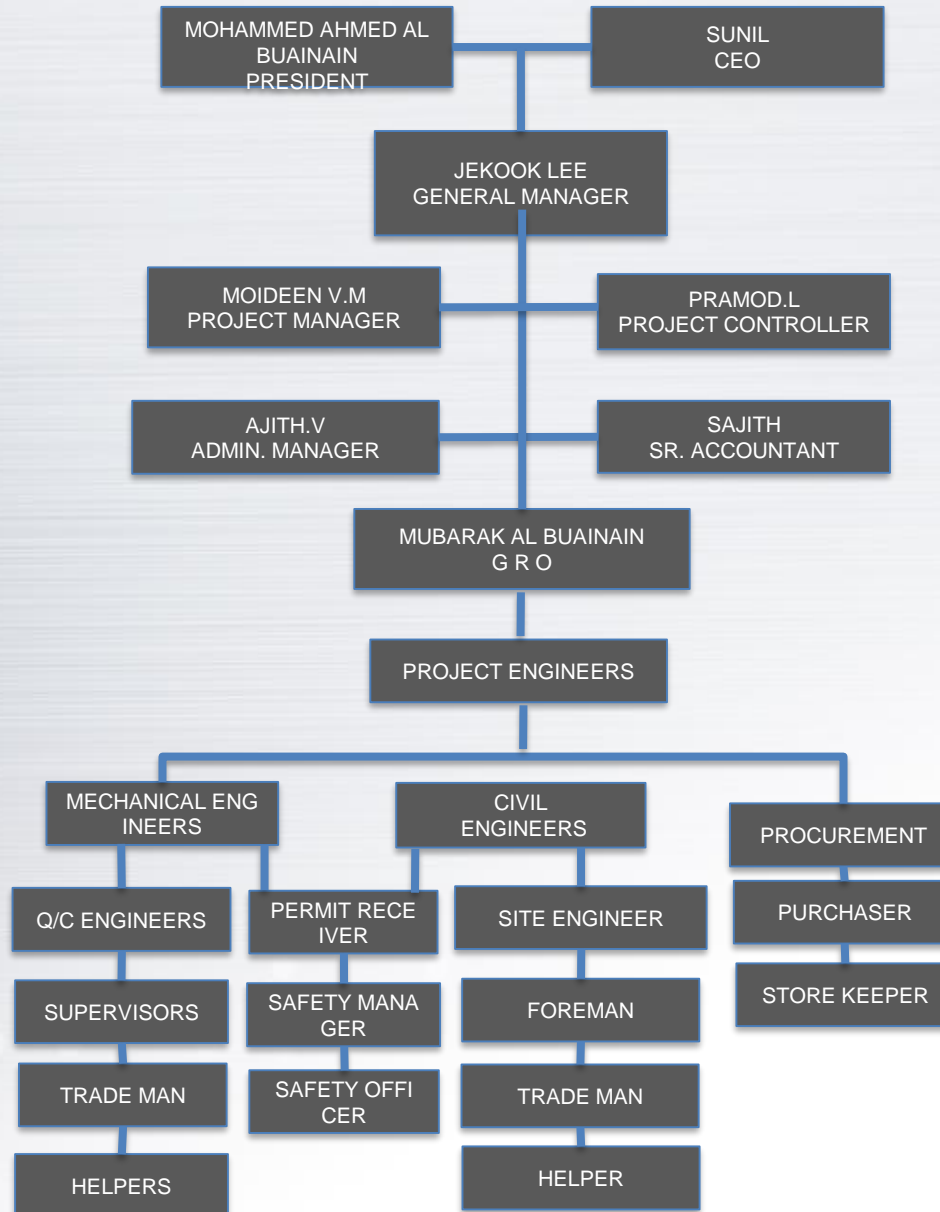
Mohammed Ahmed Hamad Al Buainain Est (MAB) mission is to provide construction service to our customers by creating a successful partnership with them throughout the construction process.

To deliver high-quality, cost-effective projects on schedule by employing and supporting motivated, flexible, and focused teams. We value the importance of our relationships and will continue to remain fair and true in our dealings with all employees, clients, vendors and partners. Our client count on our dependability and our integrity we take great pride in our accomplishments and build on them every day.

Our pledge is to establish lasting relationship with our customers by exceeding their expectations and gaining their trust through exceptional performance by every member of the Construction team.



COMPANY ORGANIZATION



Health and Safety

The prime objective of **MAB** management is to maintain excellence in safety and health standards throughout all company operation.

Professional management together with commitment by all employees to achieving a high standard of safety will prevent job hazards causing injuries, distress and financial losses.

A vigorous and pro-active commitment to Total Accident and Loss Management (TALM) is essential to ensuring that TWT employees, our clients, sub-contractors and the general public have the confidence in our ability to achieve this important objective.

This section extracted from the construction safety Execution Manual describes the manner in which the safety program is executed from the time of award of work to a subcontractor, through construction execution to a post-construction safety review. Affective safety program is implemented with a standard procedure as outlined



POLICY

Pre-Construction Planning

Prior to construction, the project safety coordinator, in conjunction with the site manager, shall complete the following work:

Develop final safety orientation program complete with handouts, films, etc., which may be required.

Develop requirements for training.

Establish interface with health officials.

Determine location of emergency medical services and establish contacts.

Establish contact with doctors, paramedic service and emergency evacuation service and make necessary requisitions for commercial service.

Site Safety Requisition for: *safety personal *First aid trailers *first aid equipment * emergency vehicles

Determine availability of fire-fighting

Establish plans for hazardous material training for employee (If applicable)

Develop and initiate Safety Incentive Program.

Update reporting forms if required.

Ensure all documents in place for pre construction safety review.



QUALITY

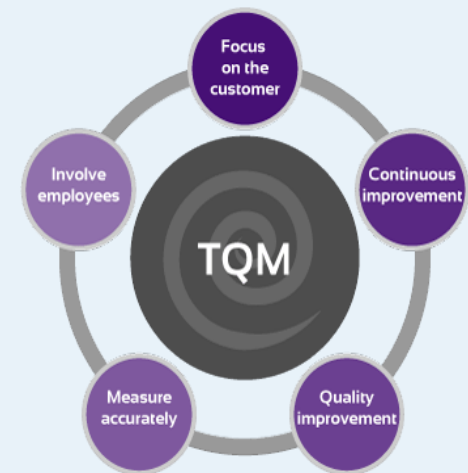
Mohamed Ahmed Hamad Al Buainain Est (MAB) is committed to excellence; over the years it has developed quality and assurance control procedures that guarantee customer satisfaction.

MAB providing optimum services to the maximum of pleasure of customers. The employees in all the departments in the company are dedicated to achieve the goals of customer satisfaction. The company recognized that to maintain its position as market leader, an effective and dynamic Quality Management System is essential. Serving our customers is the primary consideration at MAB. The quality policy is defined with the objective to achieve customer satisfaction.

This policy statement underlines the commitment of the Management and workforce towards achieving Quality in all areas resulting in total and consistent customer satisfaction, leadership in all areas of Business and continually improving the effectiveness of the Quality Management System.

Employees at all levels in the Organization will be made aware of the Company's Quality Policy through continuous training.

The design of any product & services shall fully meet the customer's quality requirements including functional, aesthetic, reliability and performance characteristics



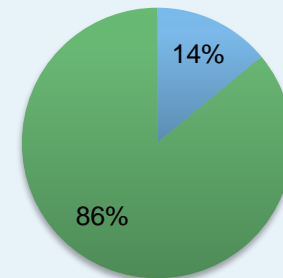
Saudization

Maintaining a high level of Saudization is one of MAB's core strategies. As per the Ministry of Labor regulation, we are strictly following and promptly maintaining adequate percentage of Saudi national personnel always. We strictly follow the Council of Ministry regarding the local employment. Further MAB aims to maximize and to increase the percentage of Saudi nationals from time to time. Our training process confirms our attention to provide necessary training to upgrade and to ensure the highest possible level of performance in order to achieve our objectives and also serve our customers. Our training program curriculum includes not only theoretical training but also hands on job training.

- Training & Career Development
- Training Courses
- Professional Development Program (PDP)
- Apprenticeship Program & Skill Enhancement Program (SEP)
- Engineering Specialist Development (ESD)
- Management Leadership Development Program (MLDP)
- Proficiency Management Program (PMP)

Saudization

■ Saudi ■ Expats



DIVISIONS AND SERVICES

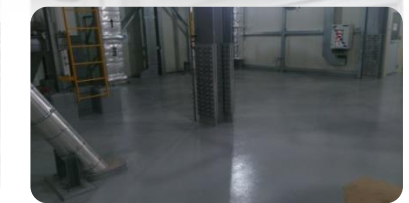
<u>CONSTRUCTION</u>	<u>EQUIPMENT RENTAL</u>	<u>INDUSTRIAL TRADING</u>
CIVIL	CRANE	CIVIL
ARCHITECTURAL	MANLIFT	ELECTRICAL
ASPHALT AND ROAD WORK	EXCAVATOR	MECHANICAL
TEMPORARY FACILITES	BOOM TRUCK	SAFETY ITEM



CONSTRUCTION EXPERIENCES

MAJOR CONSTRUCTION

- **SIPCHEM JUBAIL-1**
Wire & Component Project
POSCO Engineering
Civil & Architectural
- **SWCC RAZ AL-KHAIR**
Ras Al khair Power& Desalination Plant
Civil & Temporary Facilities
Doosan Heavy Industries
- **MA'ADEN ROLLING MILL PROJECT**
Civil & Temporary Facilities
Samsung Saudi Arabia
- **ARAMCO KHURSANIYAH**
Karan Gas Project
Asphalt, Road and Temporary Facilities work
GS Construction
- **SWCC RAZ AL-KHAIR**
Ras Al khair Power& Desalination Plant
Built up an Independent Power Plant
Doosan Heavy Industries



EQUIPMENT RENTAL DIVISION (CRANES & OTHER)

MAJOR EQUIPMENT

ALL TERRAIN CRANE

ROUGH TERRAIN CRANE

CRAWLER CRANE

MANLIFT ARTICULATE

MANLIFT TELESCOPIC

FORK LIFT

TRAILER FLAT BED

BOOM TRUCK

EXCAVATOR

GRADER

DOZER

WHEEL LOADER

ROLLER COMPACTOR

MAJOR CLIENTS

- ❖ **e-TEC ARABIA LIMITED COMPANY**
- ❖ **HYUNDAI ARABIA COMPANY LTD**
- ❖ **DAELIM SAUDI ARABIA CO. LTD.**
- ❖ **SAMSUNG SAUDI ARABIA CO. LTD.**
- ❖ **HANWHA ENGINEERING & CONSTRUCTION**
- ❖ **HAMCHANG CORP.**
- ❖ **GS CONSTRUCTION ARABIA LTD.**
- ❖ **DOOSAN HEAVY IND. & CONSTRUCTION CO.LTD.**
- ❖ **ARABIAN PIPE COATING CO.LTD**
- ❖ **NATIONAL CONTRACTING CO.LTD**
- ❖ **SSANGYOUNG ENGINEERING**
- ❖ **SUNGCHANG AL SHAIKH CONT. CO.LTD.**
- ❖ **SUNGDO ARABIA CO. LTD**
- ❖ **CHUNJO CONST. SAUDI ARABIA CO. LTD.**
- ❖ **JUBAIL UNITED PETROCHEMICALS CO. (JUPC)**

LIST OF RENTAL EQUIPMENT (CRANE ALL TERRAIN)



S/N	CAPACITY	MODEL	YEAR
AT01	AT50	Terex Demag AC 50-1	2009
AT02	AT50	Terex Demag AC 50-1	2009
AT03	AT50	Terex Demag AC 50-1	2009
AT04	AT50	Terex Demag AC 50-1	2009
AT05	AT50	Terex Demag AC 50-1	2009
AT06	AT50	Terex Demag AC 50-1	2009
AT07	AT50	Terex Demag AC 50-1	2009
AT08	AT50	Terex Demag AC 50-1	2009
AT09	AT50	Terex Demag AC 50-1	2009
AT10	AT50	Terex Demag AC 50-1	2009
AT11	AT55	Liebherr LTM 1055	2009
AT12	AT55	Liebherr LTM 1055	2009
AT13	AT55	Liebherr LTM 1055	2009
AT14	AT55	Liebherr LTM 1055	2009
AT15	AT55	Liebherr LTM 1055	2009
AT16	AT55	Grove GMK 3055	2009
AT17	AT55	Grove GMK 3055	2009
AT18	AT55	Grove GMK 3055	2009
AT19	AT100	Terex Demag AC 100	2009
AT20	AT100	Terex Demag AC 100	2009
AT21	AT100	Terex Demag AC 100	2009
AT22	AT100	Terex Demag AC 100	2009
AT23	AT100	Terex Demag AC 100	2009
AT24	AT100	Liebherr LTM 1100	2009

S/N	CAPACITY	MODEL	YEAR
AT25	AT100	Liebherr LTM 1100	2009
AT26	AT130	Grove GMK 5130	2009
AT27	AT200	Terex Demag AC 200	2009
AT28	AT200	Liebherr LTM 1200-5	2009
AT29	AT200	Liebherr LTM 1200-5	2009
AT30	AT500	Terex Demag AC 500-2	2009
AT31	AT100	Terex Demag AC 100-4L	2012
AT32	AT100	Terex Demag AC 100-4L	2012
AT33	AT100	Terex Demag AC 100-4L	2012
AT34	AT200	Terex Demag AC 200	2012
AT35	AT100	Terex Demag AC 100-4L	2012
AT36	AT250	Terex Demag AC 250-1	2012
AT37	AT100	Terex Demag AC 100-4L	2012
AT38	AT100	Terex Demag AC 100-4L	2012
AT39	AT100	Terex Demag AC 100-4L	2012
AT40	AT100	Terex Demag AC 100-4L	2012
AT41	AT100	Terex Demag AC 100-4L	2012
AT42	AT100	Terex Demag AC 100-4L	2012
AT43	AT100	Terex Demag AC 100-4L	2012
AT44	AT100	Terex Demag AC 100-4L	2012
AT45	AT200	Terex Demag AC 200	2012
AT46	AT200	Terex Demag AC 200	2012
AT47	AT100	Terex Demag AC 100-4L	2012
AT48	AT100	Terex Demag AC 100-4L	2012



LIST OF RENTAL EQUIPMENT (ROUGH TERRAIN CRANE)



S/N	CAPACITY	MODEL	YEAR
RT36	RT60	Terex RC 60	2013
RT37	RT60	Terex RC 60	2013
RT38	RT60	Terex RC 60	2013
RT39	RT60	Tadano GR 600EX	2013
RT40	RT60	Tadano GR 600EX	2013
RT41	RT60	Tadano GR 600EX	2013
RT42	RT60	Tadano GR 600EX	2013
RT43	RT60	Tadano GR 600EX	2013
RT44	RT60	Tadano GR 600EX	2013
RT45	RT60	Tadano GR 600EX	2013
RT46	RT60	Tadano GR 600EX	2013
RT47	RT60	Tadano GR 600EX	2013
RT48	RT80	Tadano GR 800EX	2013
RT49	RT80	Tadano GR 800EX	2013
RT50	RT60	Tadano GR 600EX	2013
RT51	RT60	Tadano GR 600EX	2013
RT52	RT60	Tadano GR 600EX	2013
RT53	RT60	Tadano GR 600EX	2013
RT54	RT60	Tadano GR 600EX	2013
RT55	RT60	Tadano GR 600EX	2013
RT56	RT60	Tadano GR 600EX	2013
RT57	RT60	Tadano GR 600EX	2013
RT58	RT60	Tadano GR 600EX	2013
RT59	RT60	Tadano GR 600EX	2013

S/N	CAPACITY	MODEL	YEAR
RT60	RT60	Tadano GR 600EX	2013
RT61	RT60	Tadano GR 600EX	2013
RT62	RT60	Tadano GR 600EX	2013
RT63	RT80	Tadano GR 800EX	2013
RT64	RT80	Tadano GR 800EX	2013
RT65	RT60	Tadano GR 600EX	2013
RT66	RT60	Tadano GR 600EX	2013
RT67	RT60	Tadano GR 600EX	2013
RT68	RT60	Tadano GR 600EX	2013
RT69	RT60	Tadano GR 600EX	2013
RT70	RT60	Tadano GR 600EX	2013
RT71	RT60	Tadano GR 600EX	2013
RT72	RT60	Tadano GR 600EX	2013
RT73	RT60	Tadano GR 600EX	2013
RT74	RT60	Tadano GR 600EX	2013
RT75	RT60	Tadano GR 600EX	2013
RT76	RT60	Tadano GR 600EX	2013
RT77	RT60	Tadano GR 600EX	2013
RT78	RT60	Tadano GR 600EX	2013
RT31	RT60	Terex RC 60	2013
RT32	RT60	Terex RC 60	2013
RT33	RT60	Terex RC 60	2013
RT34	RT60	Terex RC 60	2013
RT35	RT60	Terex RC 60	2013



LIST OF RENTAL EQUIPMENT (CRAWLER CRANE)



S/N	CAPACITY	MODEL	YEAR
CC06	CC80	Kobelco CKE 800	2009
CC07	CC100	XCMG QUY 100	2009
CC08	CC100	XCMG QUY 100	2009
CC09	CC100	XCMG QUY 100	2009
CC10	CC100	XCMG QUY 100	2009
CC11	CC100	XCMG QUY 100	2009
CC12	CC100	XCMG QUY 100	2009
CC16	CC100	XCMG QUY 100	2009
CC17	CC135	Kobelco CKE 1350	2009

S/N	CAPACITY	MODEL	YEAR
CC18	CC135	Kobelco CKE 1350	2009
CC19	CC135	Kobelco CKE 1350	2009
CC20	CC135	Kobelco CKE 1350	2009
CC21	CC135	Kobelco CKE 1350	2009
CC22	CC135	Kobelco CKE 1350	2009
CC23	CC135	Kobelco CKE 1350	2009
CC24	CC250	Kobelco CKE 2500	2009
CC25	CC250	Kobelco CKE 2500	2009
CC26	CC250	Kobelco CKE 2500	2009
CC01	CC50	XCMG QUY 50	2009
CC02	CC50	XCMG QUY 50	2009
CC03	CC50	XCMG QUY 50	2009
CC04	CC50	XCMG QUY 50	2009
CC05	CC50	XCMG QUY 50	2009



LIST OF RENTAL EQUIPMENT (MANLIFT)



Capacity	Type	Model	Qty	Year	Serial NO.
40m	Articulated	1250AJP	1	2014	0300191701
40m	Articulated	1250AJP	1	2011	0300143823
26m	Articulated	800AJ	1	2014	0300190469
26m	Articulated	800AJ	1	2014	0300193443
40m	Telescopic	S-125	1	2012	S12512D-349
40m	Telescopic	S-125	1	2012	S12512D-351
40m	Telescopic	S-125	1	2012	S12512D-353
40m	Telescopic	S-125	1	2012	S12512D-355
40m	Telescopic	S-125	1	2012	S12512D-359
40m	Telescopic	S-125	1	2012	S12512D-360
40m	Telescopic	S-125	1	2012	S12512D-361
40m	Telescopic	S-125	1	2012	S12512D-362
40m	Telescopic	S-125	1	2012	S12512D-363
40m	Telescopic	S-125	1	2012	S12512D-365
40m	Telescopic	S-125	1	2012	S12512D-366
40m	Telescopic	S-125	1	2012	S12512D-367
TOTAL			16		



* New equipment and schedule

Capacity	Type	Model	Qty	Year	Serial NO.	Status	Rental schedule	
40m	Articulated	1250AJP	7	2015		* May 28, Dammam scheduled to arrive	June.2015 rentals available	6/1
TOTAL			7					

COMPANY DETAILS

Name of the Company :	Mohammed Ahmed Hamad Al Buainain Contracting Est. (MAB)
Commercial Registration Number :	2055125097, Al-Jubail
VAT Registration No. :	310329054100003
C.O.C Registration :	258411
Office Address :	P.O. Box No: 1946, Al-Jubail - 31951
Contact Details :	Tel: + 966 3 363 6197, +966 3 363 1300 Fax: + 966 3 363 6198 E-mail: info@kbhotech.com Web site: www.kbhotech.com
Contact Persons :	1. Mohammed Ahmed Hamad Al Buainain / President 2. Sunil S. K / Managing Director 3. Jekook Lee/ General Manager



COMERCIAL REGISTRATION

٧٠٠٦٣١٦٢٢٢	الرقم:	٢٠٥٥١٢٥٠٩٧	التاريخ:	١٤٤١/٠٧/٠٧ هـ
شهادة تسجيل مؤسسة فردية				وزارة التجارة والاستثمار Ministry of Commerce and Investment
الإسم التجاري للمؤسسة : مؤسسة محمد احمد بن حمد آل بو عنين للتجارة والمقاولات				
مركزها الرئيسي : ٦٥٠٤ ، السلوى ، المرقاب ، ٣٨٥٣				
ص.ب : الرمز البريدي : ٣٥٥١٤ هاتف : ١٣٣٦٣٦١٩٧ فاكس :				
اسم التاجر : محمد احمد بن حمد آل بو عنين				
الجنسية : سعودي				
تاريخ الميلاد : ١٤١٥ هـ				
رقم السجل المدني - الإقامة : ١٠٨٢٥٩٤٨٠٣ تاريخه : ١٤٣٨/٠٥/٢٩ هـ				
رقم الحفيظة - الجواز : تاريخه : مصدره :				
النشاط : الإت莎اوات العامة للمباني السكنية				
رأس المال : ٢٥٠٠٠ خمسة و عشرون ألف ريال فقط لا غير				
اسم المدير أو الوكيل المفوض : محمد احمد بن حمد آل بو عنين				
الجنسية : سعودي				
تاريخ الميلاد : ١٤١٥ هـ				
رقم السجل المدني - الإقامة : ١٠٨٢٥٩٤٨٠٣ تاريخه : ١٤٣٨/٠٥/٢٩ هـ				
مصدره :				
سلطات المدير				
يشهد مكتب السجل التجاري بمدينة الجبيل . بأنه تم تسجيل هذه المؤسسة بسجل مدينة الجبيل .				
وتنتهي صلاحية الشهادة في ١٤٤٢/٠٧/٠٦ هـ بموجب الإيصال رقم: ٣٨٥٢٧٣٣ و تاريخ : ١٤٤١/٠٧/٠٧ هـ				
مدير السجل التجاري : نايف صالح الطاسان				
التوقيع :				
				
				
الختم				
يمكنك التحقق من صحة هذه الشهادة بالدخول على http://v.mci.gov.sa To Verify the information of this certificate visit				

